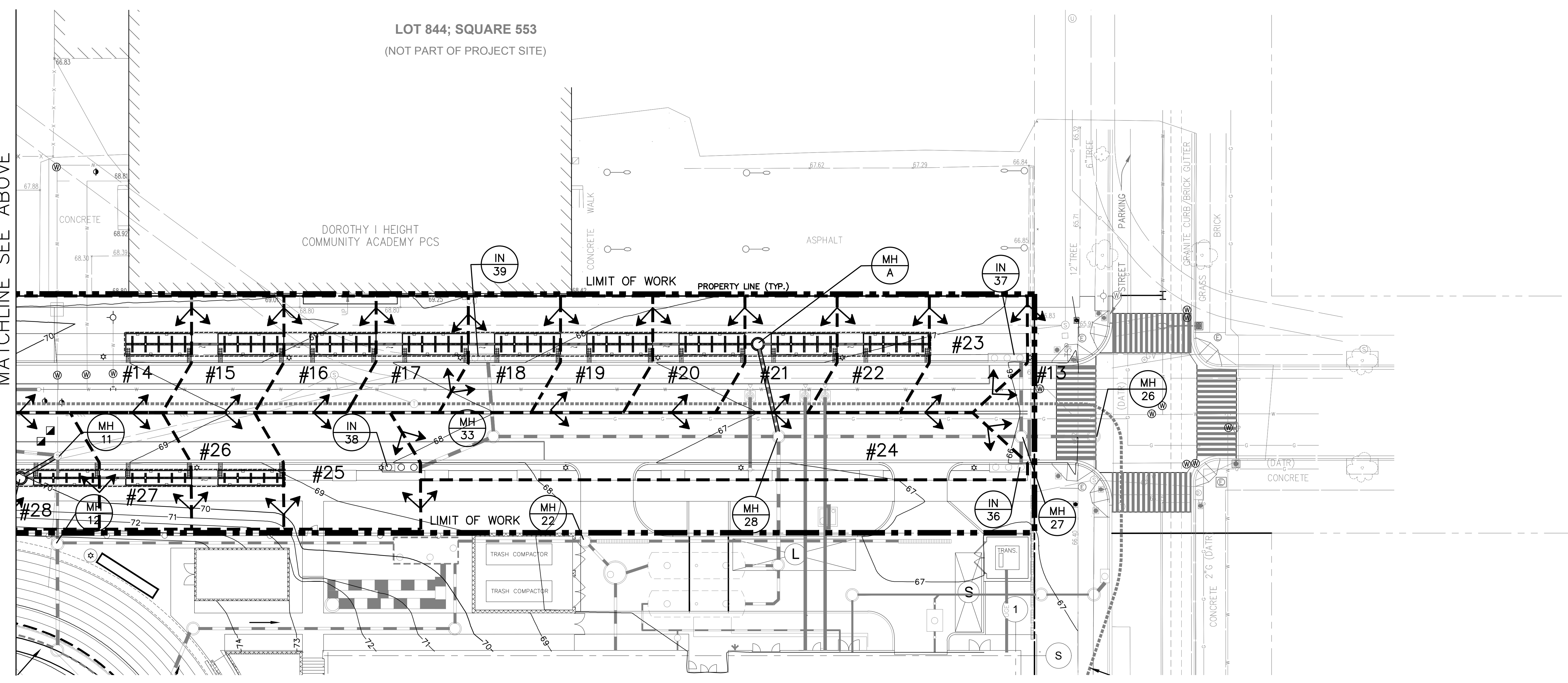
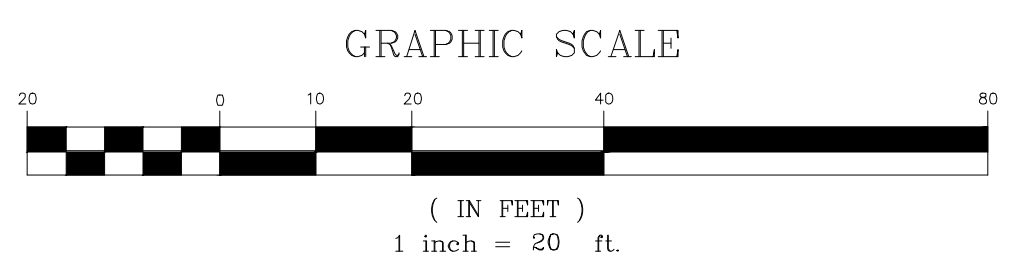


SWM QUALITY SUMMARY TABLE				
DRAINAGE AREA	TOTAL AREA (SF)	% IMPERVIOUS	SWRV REQD. (CF) (1.2")	VOLUME PROVD. (Sv) (CF)
2	1598	89.99	141	200
3	873	87.97	76	200
4	1511	90.01	133	200
5	1550	90.00	136	200
6	1546	89.97	136	200
7	1547	89.98	136	200
8	1550	90.00	136	200
9	1547	89.98	136	200
10	1555	89.97	137	200
11	1543	90.02	136	200
14	4953	90.63	438	200
15	1549	89.99	136	200
16	1547	100.00	147	200
17	1552	94.97	142	200
18	1547	89.98	136	200
19	1550	90.00	136	200
20	1549	89.99	136	200
21	1549	89.99	136	200
22	1549	89.99	136	200
26	1551	76.02	121	138
27	1545	75.99	121	138
28	1545	75.99	121	138
29	1551	76.02	121	138
30	1548	75.97	121	138
31	1566	75.99	122	138
32	1534	76.01	120	138
33	1547	76.02	121	138
34	1547	76.02	121	138
35	1548	76.03	121	138
36	1548	76.03	121	138
37	1517	76.01	119	138
38	868	69.01	64	138
39	1606	77.02	127	138
TOTAL	52877		4459	6125



- LEGEND**
- INLET
  - PROPERTY LINE
  - LIMIT OF WORK
  - DRAINAGE AREA
  - LABELS
  - DRAINAGE AREA LABEL

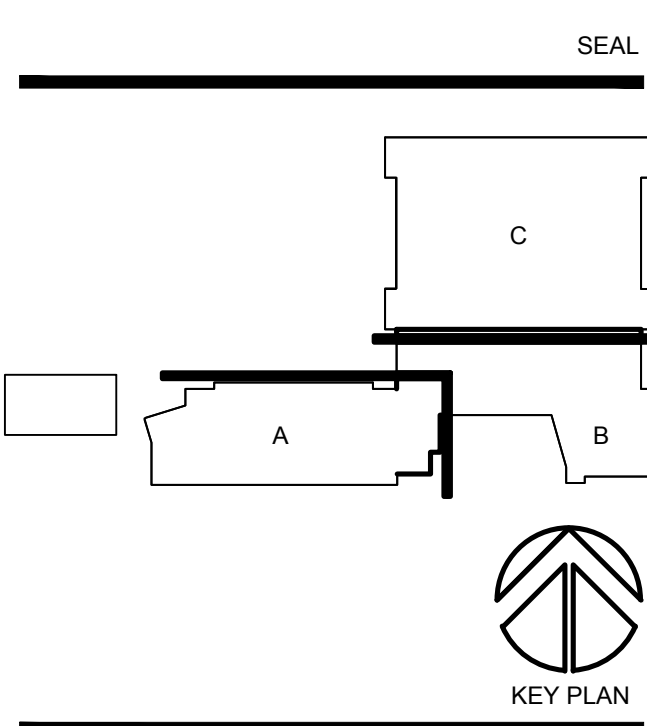


**MISS UTILITY**  
 48 HOURS BEFORE YOU DIG  
 CALL "MISS UTILITY" AT 202-265-7177 OR 811  
 OR LOG ON TO <http://www.missutility.net>

**DDOE/DGS PROGRESS SET**  
 MARCH 22, 2013  
 PRELIMINARY, NOT FOR CONSTRUCTION,  
 RECORDING PURPOSES, OR IMPLEMENTATION

SUBMISSIONS:  
 FEASIBILITY STUDY - GREEN STREET 17 JAN 13  
 PROGRESS SET - GREEN STREET 04 MAR 13

REVISION  
 NO. DESCRIPTION DATE



**SEAK ARCHITECTS & ENGINEERS, A Joint Venture**  
 1185 MACARTHUR BLVD., NWSUITE 108  
 WASHINGTON, DC 20019  
 T: 202.393.1523

**MOODY NOLAN**  
 5335 WISCONSIN AVE., NW, SUITE 900  
 WASHINGTON, DC 20015  
 T: 202.244.4199

**DISTRICT OF COLUMBIA PUBLIC SCHOOLS OFFICE OF PUBLIC EDUCATION FACILITIES**  
**MODERNIZATION**  
 2405 EAST CAPITAL STREET, SE  
 WASHINGTON, DC 20003  
 T: 202.698-7762

**Architect of Record:**  
**PERKINS EASTMAN**  
 2121 WARD COURT, NW FLOOR 6  
 WASHINGTON, DC 20037  
 T: 202.861.1325

**Associate Architect:**  
**MOODY NOLAN**  
 5335 WISCONSIN AVE., NW, SUITE 900  
 WASHINGTON, DC 20015  
 T: 202.244.4199

**Structural:**  
**SKSA STRUCTURAL ENGINEERS**  
 1155 CONNECTICUT AVE., NW, SUITE 800  
 WASHINGTON, DC 20036  
 T: 202.699.2520

**MEP:**  
**SETTY & ASSOCIATES INTERNATIONAL**  
 6185 MACARTHUR BLVD., NWSUITE 108  
 WASHINGTON, DC 20016  
 T: 202.393.1523

**Civil Engineer:**  
**AMT LLC**  
 10 G STREET, NE, SUITE 430  
 WASHINGTON, DC 20002  
 T: 202.289.4545

**Landscape:**  
**LANDSCAPE ARCHITECTURE BUREAU**  
 174 17th STREET, SE  
 WASHINGTON, DC 20003  
 T: 202.543.6950

**Food Service:**  
**NYIKOS ASSOCIATES, INC**  
 18219 A FLOWER HILL WAY  
 GAITHERSBURG, MD 20879  
 T: 240.663.9530

**Acoustics, Audio-Visual, Telecommunications & Security Design:**  
**SHEN WILSON WILKE**  
 1220 N. FILLMORE ST., SUITE 380  
 ARLINGTON, VA 22201  
 T: 703.248.8501

**Aquatic Design:**  
**AQUATIC DESIGN GROUP**  
 2238 FARMWAY AVENUE  
 CARLSBAD, CA 92008  
 T: 760.438.8400

**ENGINEER'S CERTIFICATE**

I, the undersigned, being a duly Licensed Professional Engineer in the State of Maryland, do hereby certify that the above is a true and correct copy of the original as the same appears in my files.

DATE: \_\_\_\_\_

**PROJECT TITLE:**  
**DUNBAR SENIOR HIGH SCHOOL**  
 101 N STREET NORTHWEST,  
 WASHINGTON D.C.

**PROJECT No:** 107-236.007

**DRAWING TITLE:**  
**STORMWATER "O" STREET DRAINAGE AREA PLAN**

**SCALE:** 1" = 30' 0"

**PROGRESS SET - GREEN STREET**

MARCH 4, 2013