

Next Generation Stormwater Design Criteria

Jon Hathaway, PhD, PE
Associate Professor



THE UNIVERSITY OF
TENNESSEE
KNOXVILLE



Next Generation?

- Local Materials, Local Context
- Climate Change
- Data, Sensors, Controls
 - Maintenance
 - Optimization
 - Systems Approaches for Watersheds

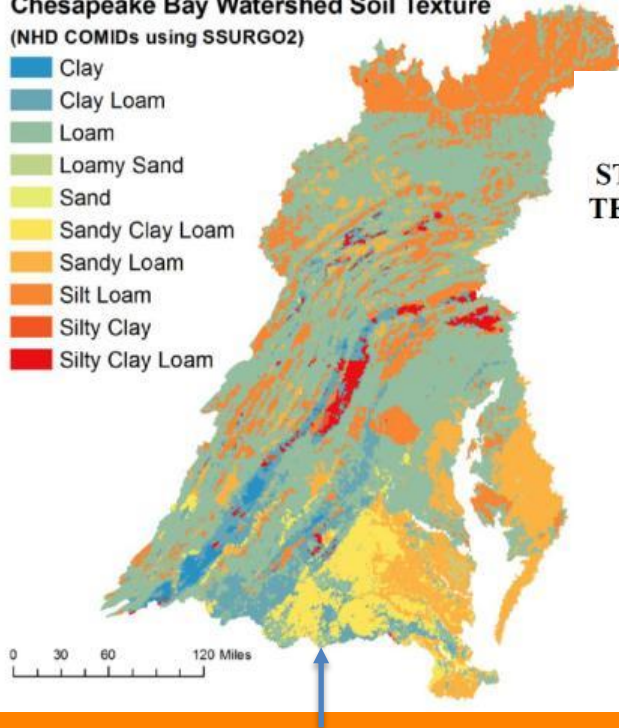
Local Materials, Local Context



Chesapeake Bay Watershed Soil Texture

(NHD COMIDs using SSURGO2)

- Clay
- Clay Loam
- Loam
- Loamy Sand
- Sand
- Sandy Clay Loam
- Sandy Loam
- Silt Loam
- Silty Clay
- Silty Clay Loam



CSN TECHNICAL BULLETIN No. 1

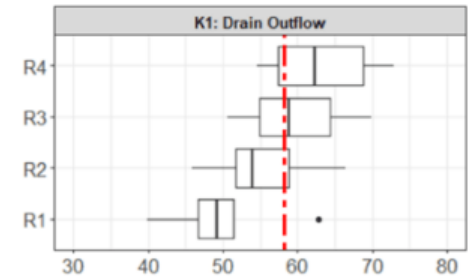
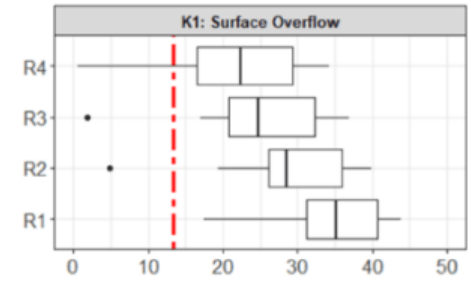
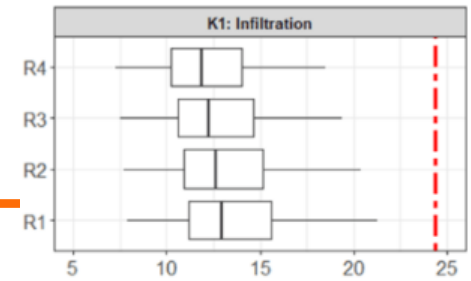
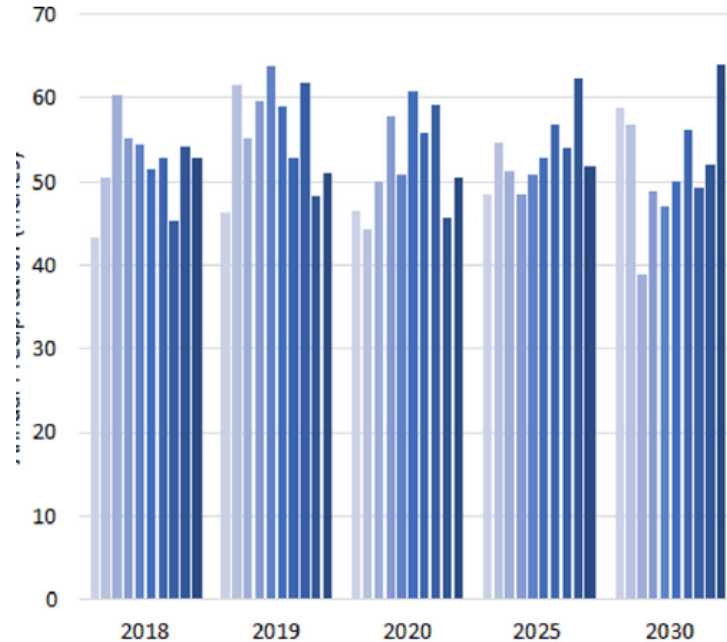
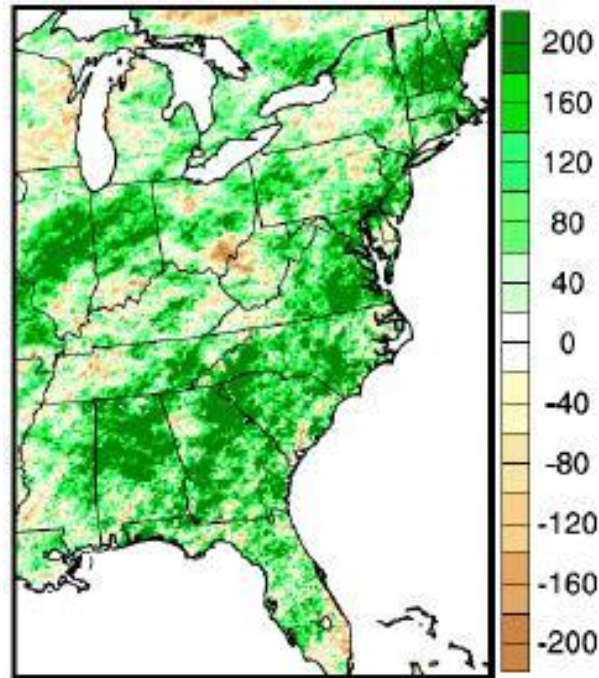
STORMWATER DESIGN GUIDELINES FOR KARST TERRAIN IN THE CHESAPEAKE BAY WATERSHED VERSION 2.0



Tetra Tech, Victor D'Amato

Nutrient Attenuation in Chesapeake Bay Watershed Onsite Wastewater Systems

Climate Change

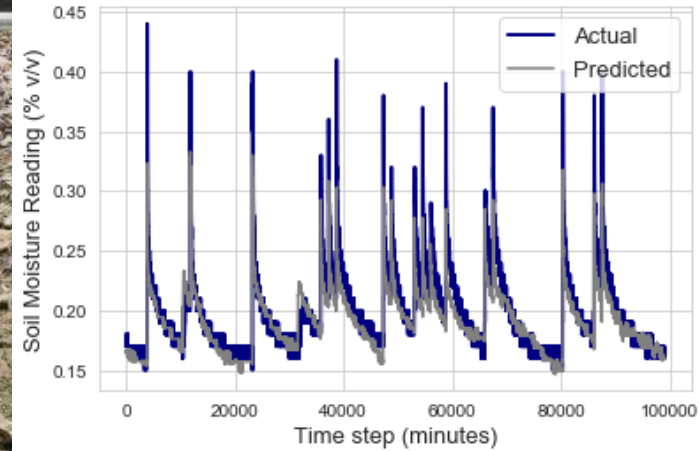


Gao et al. (2012); Barah et al. (2020); Tirpak et al. (2021)

Data, Sensors, and Control



Data, Sensors, and Control



Data, Sensors, and Control



Data, Sensors, and Control

