

**Welcome to the  
2012  
Baywide  
Stormwater  
Partners Retreat**



# Contact Info



**Tom Schueler**

Chesapeake Stormwater Network and  
EPA Chesapeake Bay Program Stormwater Coordinator

Baltimore, MD

[watershedguy@hotmail.com](mailto:watershedguy@hotmail.com)  
[www.chesapeakestormwater.net](http://www.chesapeakestormwater.net)  
[www.cbstp.org](http://www.cbstp.org)

**“A New Era of Local Stormwater  
Implementation”**

**FOURTH ANNUAL BAY-WIDE  
STORMWATER PARTNERS RETREAT**

**May 24 and 25, 2012**



**Sponsored by the**

**National Fish and Wildlife Foundation  
Chesapeake Stormwater Network  
Alliance for the Chesapeake Bay  
Water Environment Research Foundation**



# Special thanks to the Retreat Steering Committee

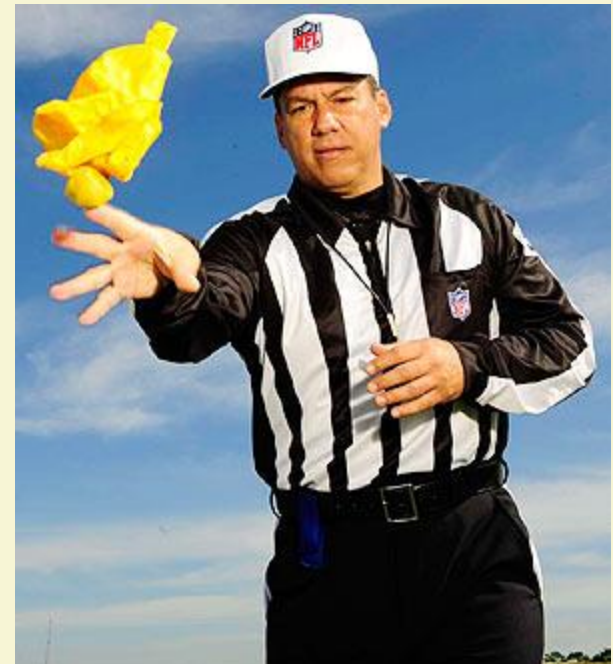
Shirley Clark, Penn State University - Harrisburg  
David Hirschman, Center for Watershed Protection  
Charlotte Katzenmoyer, City of Lancaster  
Leslie Middleton, Rivanna River Basin Commission  
Jennifer Molloy, U.S. EPA  
Rebecca Stack, DDOE  
Duncan Stuart, City of Baltimore  
Amanda Bassow, NFWF  
Lou Etgen, Alliance for the Chesapeake Bay  
Brendan McIntyre, NFWF  
Jeff Moeller, WERF

# Retreat Ground Rules

- Contribute to the dialogue
- Bring your best ideas to the table
- Listen to, and play well with others
- Explore opportunities to collaborate
- Network with your peers

## Penalties Enforced For:

- Wind-Bagging
- Whining
- Interference w/ Other Players
- Unnecessary Use Power Point
- Model Bashing
- Excessive Seriousness



**Agenda at a Glance**  
**2012 Chesapeake Bay Stormwater Retreat**  
**DAY 1**

8:00 to 8:30	<i>Welcome and Introductions (ACB/WERF/NFWF)</i>	
8:30 to 9:00	<i>Bay-wide Stormwater Capacity Initiatives</i>	
9:00 to 10:15	<i>New Developments in Bay Stormwater Nutrient Accounting</i>	
10:15 to 10:45	<i>EXTENDED MORNING BREAK</i>	
<i>Innovative Technology Sessions</i>		
10:45 to 12:00	<i>A. Clean &amp; Green Streets</i>	<i>B. Urban Fertilizer Mgmt</i>
12:00 to 1:30	<i>LUNCH (Optional Working Session on Improving LID Maintenance and BMP Verification Capacity--Diane Schrauth)</i>	
1:30 to 2:30	<i>C. Smarter BMPs</i>	<i>D. Urban Forestry Solutions</i>
2:30 to 3:30	<i>E. Illicit Sewage Discharges</i>	<i>F. Fostering LID Innovation</i>
3:30 to 4:00	<i>EXTENDED AFTERNOON BREAK</i>	
4:00 to 5:00	<i>Thinking Ahead: How Will Climate Change Influence Future Stormwater Management in the Bay Watershed?</i>	
5:00 to 5:30	<i>Thinking Ahead: Other Game Changers in the Bay Watershed?</i>	
<i>DINNER, SOCIAL HOUR,          POSTER SESSION, STORMWATER FILM FESTIVAL</i>		

## **AGENDA at a Glance May 25<sup>th</sup>**

7:30 to 8:00	Welcome
8:00 to 8:45	<b><i>Federal and State Stormwater Regulatory Update</i></b> <ul style="list-style-type: none"><li>• Cecilia Lane, CSN, Moderator</li></ul>
8:45 to 10:00	<b><i>Effective Strategies in Delivering BMPs:</i></b> Panel of Local Case Studies will provide their tips and tricks on how to deliver BMPs at a greater scale: <ul style="list-style-type: none"><li>• Lucinda Power, EPA CBPO, Moderator</li></ul>
10:00 to 10:30	<b><i>BREAK</i></b>
10:45 to 12:00	<b><i>Ask the Stormwater Financing Experts:</i></b> Panel of stormwater utility consultants, local utility managers and stormwater financing experts
12:00 to 12:30	<b><i>Working Lunch in the Meeting Rooms</i></b>
12:30 to 1:30	<b><i>EPA Listening Session: What We Really Need to Succeed</i></b> Provide feedback to panel of EPA managers from CBP and Region 3 on what they really need to be able to ramp up BMP implementation to meet the TMDL <ul style="list-style-type: none"><li>• Moderator, Tom Schueler, CSN</li></ul>
1:30 to 2:00	<b><i>Wrap up and Evaluation, Lou Etgen, ACB</i></b>
2:00 PM	<b><i>ADJOURN FOR WEEKEND</i></b>



### Stoneroller *Campostoma anomalum*

- Small, minnow-like fish that grows to a length of ten inches.
- Found in clean streams over a hard bottom in runs and riffles in the Bay Watershed.
- Uses its lower lip to scrape algae and detritus.
- Has a long intestine, making them incredibly efficient at digesting *stream scum*.
- Males dig spawning pits in riffles by repeatedly driving their heads into the gravel.
- Females enter spawning pits to deposit adhesive eggs, and then abandon them.
- Make good bait, but are difficult to culture.



# Key Themes

- Bay-Wide Stormwater Capacity Scorecard
- Some of Our Recent Victories
- Some of the Remaining Challenges
- **Call Out**: Some Upcoming Initiatives
- **Discussion**: What Elements Should be included in an Adaptive Plan to Improve Local and State Stormwater Capacity

## Key to Bay Scorecard Summary

	The tool is churning out BMPs for the Bay
	The tool is now in place
	The tool is on track to be used
	The tool needs significant improvement
	The tool either doesn't exist or work
	Not applicable
I	Major implementation obstacles



# Where we are in 2012

CORE STORMWATER TOOL	DC	DE	MD	PA	NY	VA	WV	EPA
Local WIPs Bay TMDL	I	I	I	I	I	I	I	I
Large MS4 Permits	I	I	I		I	I		I
Small MS4 Permits		I	I	I	I	I	I	
Regs for New Development	I	I	I	I	I	I	I	
Regs for Redevelopment	I	I	I	I	I	I	I	I
Stormwater Manual			I	I				
Fertilizer P Ban								
Industrial Permits								
Construction Permits	I	I	I	I	I	I	I	
Permit Enforcement								
Local/ State Financing	I		I					



# Bottom Line of Chesapeake Bay TMDL For Urban Suburban Sector



~25 to 30% TP and TN  
load reductions needed  
from existing  
development (plus  
sediment reductions)

No increase in future load  
as a result of growth and  
development

60% of the reductions to  
be achieved by 2017

100% by 2025

## Some Real Progress in last year to get the tools in place

- Bay-wide TMDL and State Phase 2 WIPs now have specific numeric targets for stormwater reductions
- DC as national leader in green roofs
- New stormwater regulations in every Bay state
- Several State P Fertilizer Bans (and industry phase-out)
- PA small MS4 permits & Bay cleanup plans
- Stormwater Financing Law in MD

## Audience Call Out # 1

What are some other stormwater accomplishments in the last few years which you want to talk some smack about ?





## Audience Call Out # 2

What are the key challenges/frustrations you face in the next few years when it comes to expanding stormwater implementation in your jurisdiction ?

Everybody needs to give their short "tweet"  
You may ditto,  
but you can't repeat!



# Some Recurring Capacity-Building Themes

## Some Recurring Themes When it Comes to Capacity Building

- Enhancing local stormwater financing
- Better technical data on BMP removal rates and costs
- More Training
- Better and More Integrated Planning Tools
- Dealing w/ Maintenance and Verification
- Better tools for enforcement & accountability
- Greater alignment at local/state/federal level



Some Relief is On the Way !

Lets hear from

- NFWF
- CWP
- EPA
- WERF
- Others

# A Few CBSTP Initiatives

- On-line "College of Stormwater Knowledge"
- Retrofit Training (Field and Classroom)
- Landscape Contractor Training and Videos
- LID Inspection and Maintenance Training (Field/Classroom)
- State-specific stormwater training workshops (DC, DE, PA, WV, VA)
- Stormwater training for federal facilities and agencies
- Outreach on local WIP implementation

### Impervious Disconnection

Webcast which covers the types of disconnections, runoff reduction and pollutant removal performance, typical design standards and how to set up a disconnection program.

#### the College of Stormwater Knowledge

Delivering targeted training on new tools and practices to improve the quality of stormwater runoff.

[Learn more...](#)



### Living Lightly on the Bay

#### Becoming a Habitat Farmer

Decrease your impact on stormwater and the Chesapeake Bay by farming your yard for habitat and runoff reduction.

[Learn more...](#)

### Chesapeake Stormwater Network

The Chesapeake Stormwater Network

### Stormwater News



#### Financing Stormwater Retrofits in Philadelphia and Beyond

Stormwater runoff is a principal cause of urban waterway pollution nationwide, fouling rivers, lakes, beaches, and drinking water supplies. Read the case study by...

[Learn more...](#)

Soil Health Conference

## Discussion:

What Elements should be included in an Adaptive Plan\* to Improve Stormwater Capacity at the Local and State Level Across the Bay Watershed ?

\* Urban Stormwater Workgroup will be drafting comprehensive plan this summer and fall